

Marine & Safety Tasmania
“Making Boating Better”

Recreational Boating Fund

Successful applications for 2009



South Burnie Boat Ramps



- construct lower landing stage on outer walkway
- RBF allocation - \$20,000 (plus \$80,000 from licence fees)

Gravelly Beach (Tamar River)



- construct new landing stage/pontoon at boat ramp
- upgrade boat ramp
- RBF allocation - \$40,000 (plus \$60,000 from licence fees)

St Helens (Foreshore)



- upgrade and extend boat ramp
- RBF allocation - \$30,000 (plus \$10,000 from facility owner)

Waubs Gulch, Bicheno



- upgrade and extend southern walkway
- RBF allocation - \$40,000

Jubilee Street, Swansea



- replace walkway/landing stage at boat ramp
- RBF allocation - \$70,000 (plus \$30,000 from facility owner)

Little Swanport



- Install pontoon system at boat ramp
- RBF allocation - \$40,000 (plus \$20,000 from facility owner)

White Beach, South



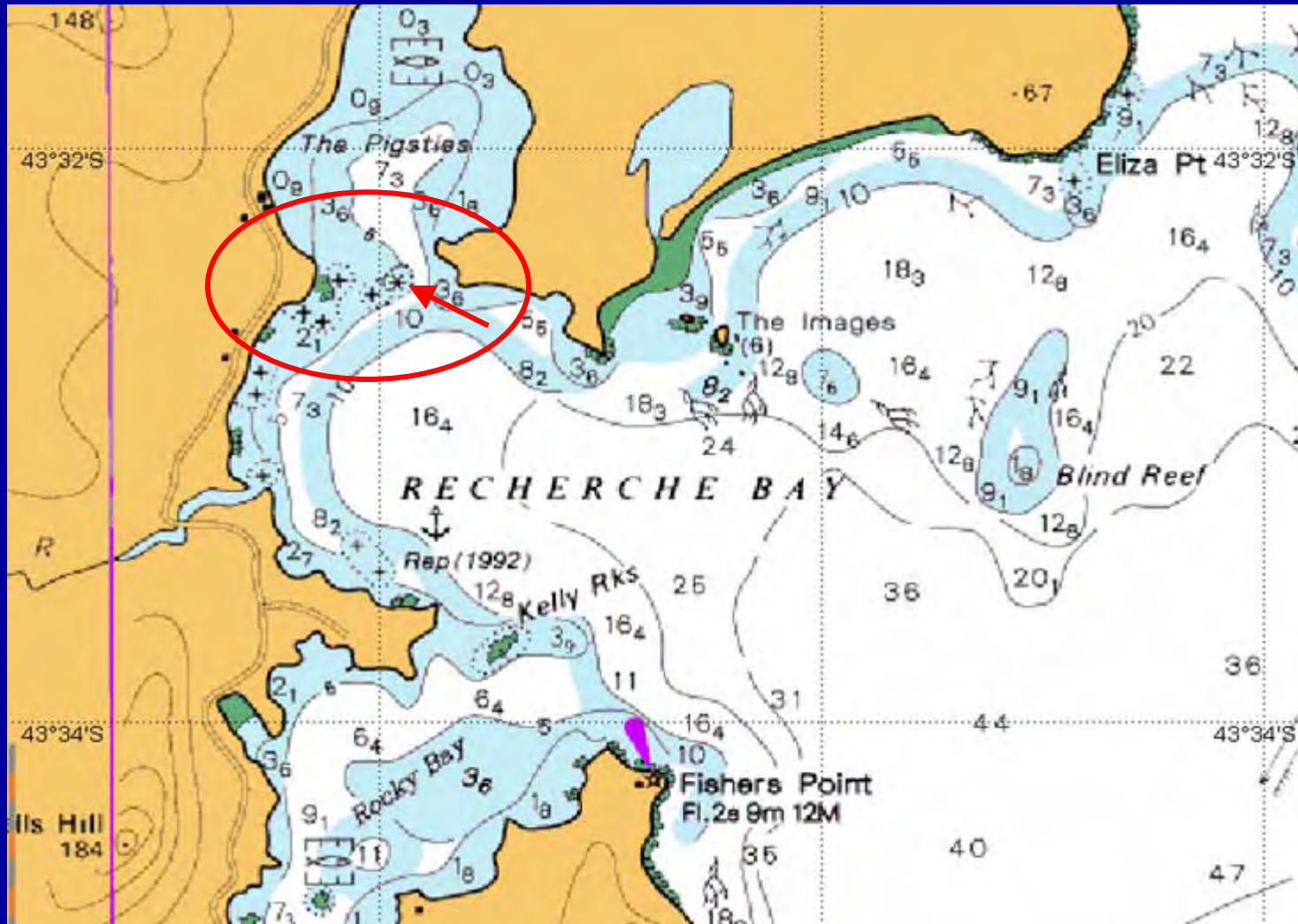
- construct new walkway at recently upgraded boat ramp
- RBF allocation - \$42,000 (plus \$34,000 from facility owner)

Charlottes Cove



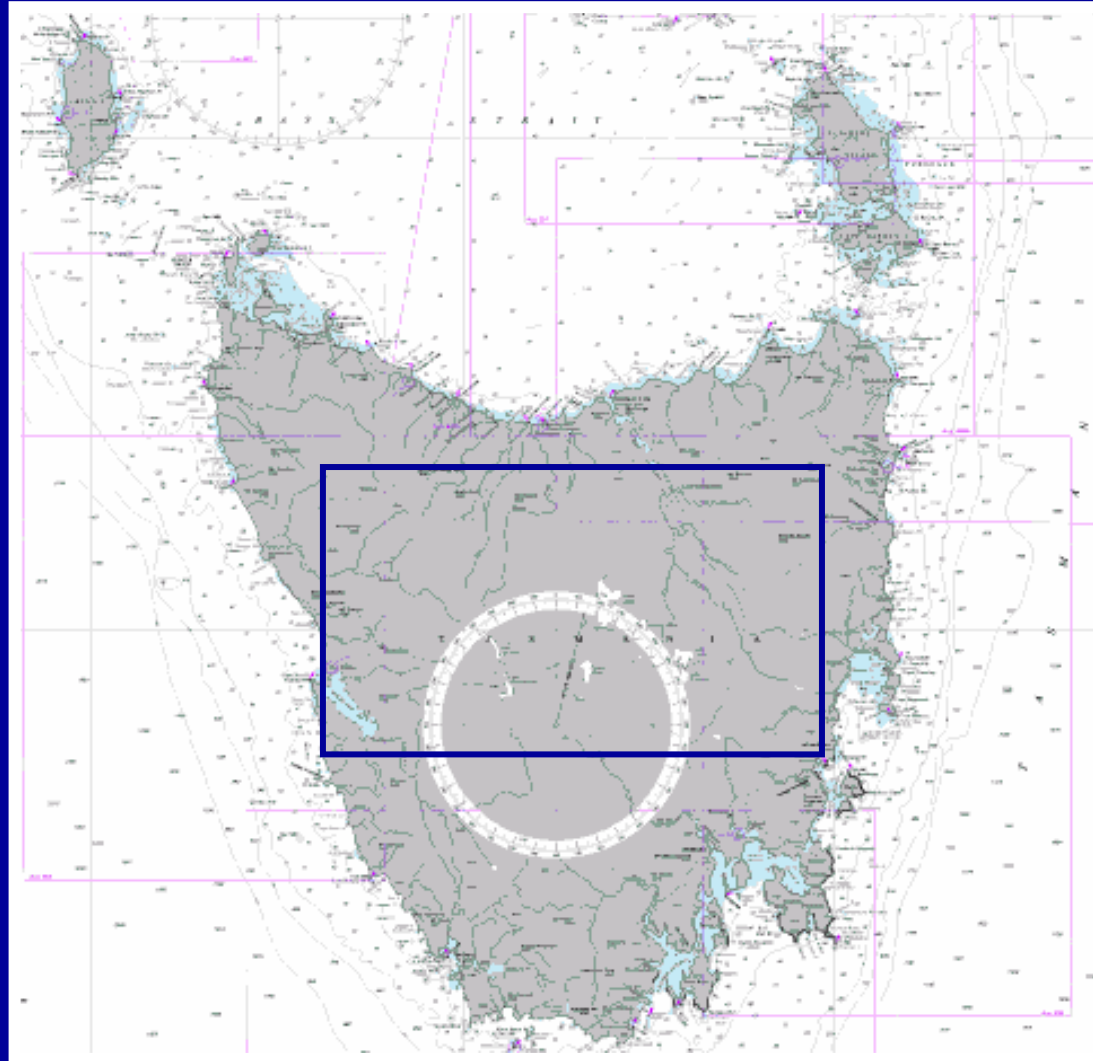
- extend jetty to allow use by larger, deeper draught vessels
- RBF allocation - \$20,000 (plus \$15,000 from facility owner)

Recherche Bay



- Install navigation beacon at entrance to The Pigsties
- RBF allocation - \$8,000

Inland Lakes



- Various works on inland lakes & rivers in consultation with Hydro & IFS
- RBF allocation - \$45,000